

1/2" = 1'-0"

1/2" = 1'-0"

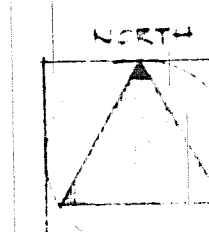
1/2" = 1'-0"

1/2" = 1'-0"

1/2" = 1'-0"

1/2" = 1'-0"

1/2" = 1'-0"

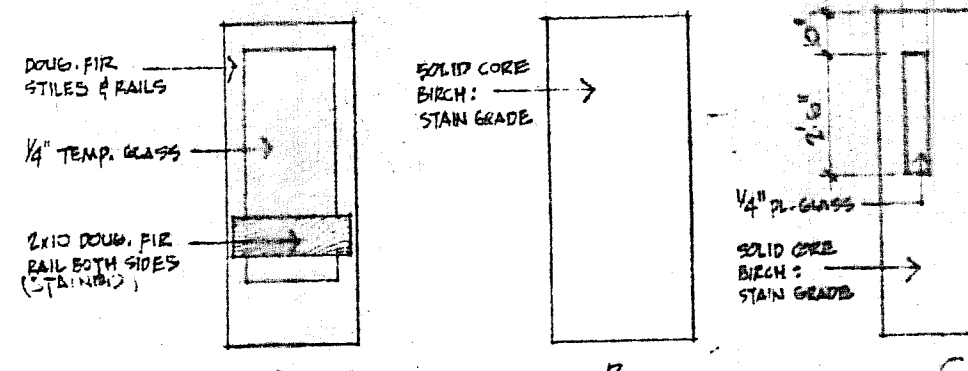


FLOOR PLAN SCALE 1/8" = 1'-0"

DOOR SCHEDULE

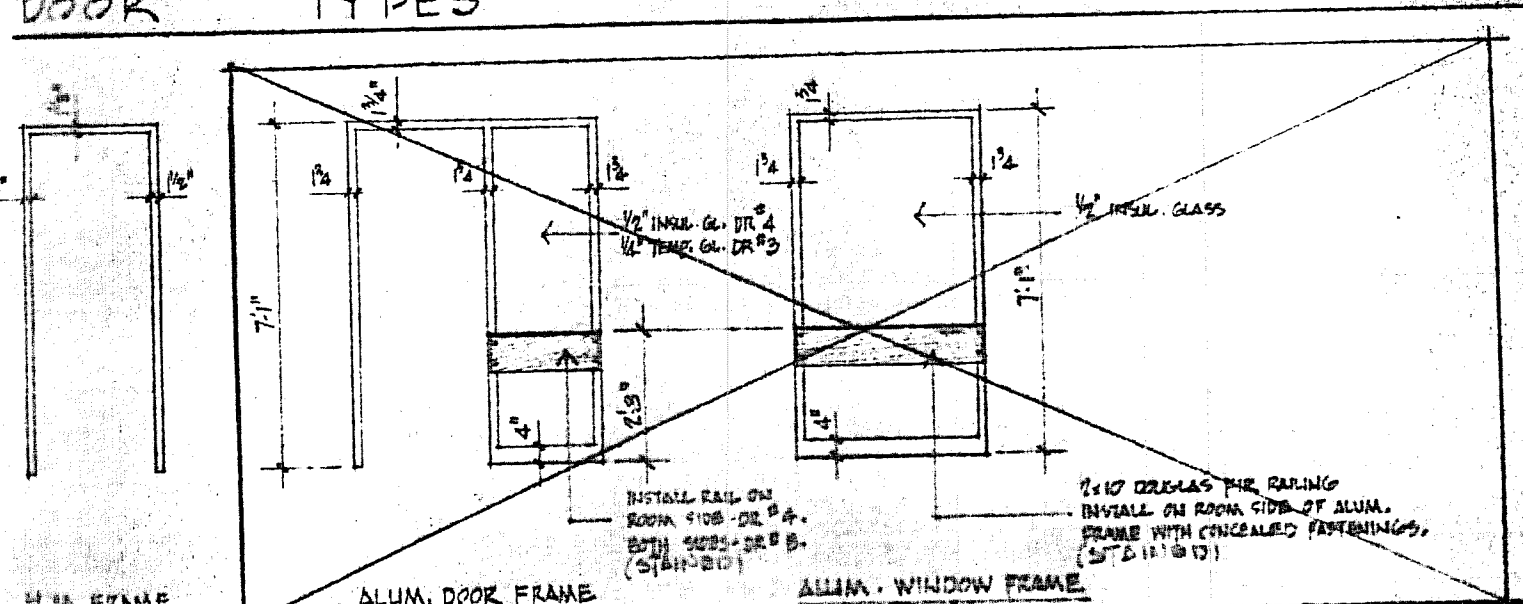
NO.	SIZE	TYPE	MAT'L.	FRAME	HARDWARE	REMARKS
1	3'-0" x 6'-11 1/2"	B	—	H.M.	REUSE BUNTING	REUSE EXIST. DOOR & FRAME
2	3'-0" x 6'-11 1/2"	C	BIRCH	H.M.	1, 2, 4, B	
3	3'-0" x 6'-11 1/2"	A	D. FIR	H.M.	3, 4, B	
4	3'-0" x 6'-11 1/2"	C	W.M.	H.M.	5, 6, 7, B	
5	2'-4 1/2" x 4'-0"	B	BIRCH	WOOD	9, 10	
6	2'-4 1/2" x 4'-0"	B	BIRCH	WOOD	9, 10	

1/2" = 1'-0"



- HARDWARE LEGEND
1. PUSH AND PULL PLATE
 2. SURFACE MOUNTED CLOSER
 3. CONCEALED CLOSER W/ HOLD-OPEN
 4. DOOR BUMPER
 5. PAINT HARDWARE
 6. WEATHERSTRIPPING
 7. ALUM. THRESHOLD
 8. 1 1/2" PAIR BUTTS
 9. 1 PAIR BUTTS
 10. LATCHSET WITH FLUSH RETRACTABLE HANDLE ON COURT SIDE

DOOR TYPES



FRAME TYPES

ROOM FINISH SCHEDULE

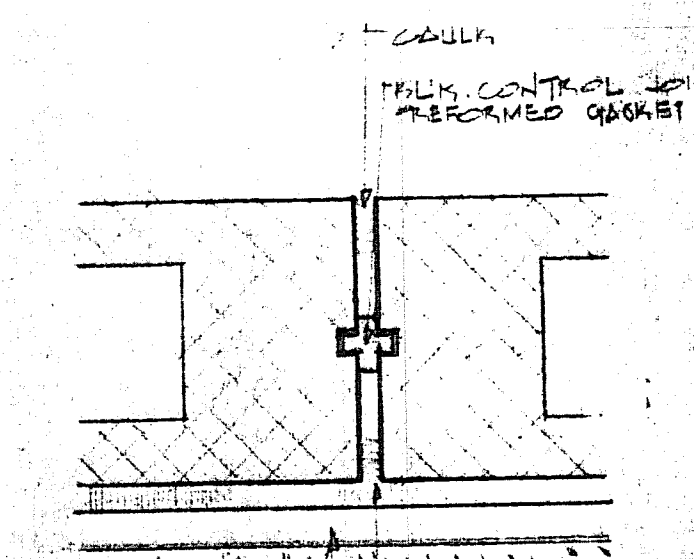
MATERIALS	FLOOR	BASE	WALLS	CEILING	CEILING HEIGHT	REMARKS
ROOM NAME	ENCASED CONCRETE	CARPET AND PAD	CONCRETE	CONCRETE	8'-0"	
HALL	VINYL TILE	VINYL	CONCRETE	CONCRETE	8'-0"	SEE NOTE #1
CORRIDOR	VINYL TILE	VINYL	CONCRETE	CONCRETE	8'-0"	SEE NOTE #1
OBSERVATION	VINYL TILE	VINYL	CONCRETE	CONCRETE	8'-0"	SEE NOTE #1
COURT NO. 1	VINYL TILE	VINYL	CONCRETE	CONCRETE	8'-0"	SEE NOTE #1
COURT NO. 2	VINYL TILE	VINYL	CONCRETE	CONCRETE	8'-0"	SEE NOTE #1

NOTES

1. EXPOSED CONCRETE BLOCK WALLS IN CORRIDOR AND OBSERVATION AREA SHALL BE 10'-0" UNITS TOoled.
2. ALL UNIT 8'-0" FOR PERMANENT Q-1
3. 1/2" INSUL. 20'-0" TO 1/2" INSUL. 20'-0"

GEN. NOTE:

REPLACE ALL SHOWN CEVENT PLASTER, METAL CHANNELS AND INSULATION W/ "DRYVIT" SYSTEM W/ 1" INSULATION



CONTROL JOINT (C.J.) DETAIL (TYP) 1/2" x 1'-0"

1-12-77

NO. DATE REVISIONS

FLOOR PLAN, ROOF PLAN, SCHEDULES

RACQUETBALL COURTS

UPPER BUCKS Y.M.C.A.

QUAKERTOWN BORO, BUCKS CO., PENNSYLVANIA

DWN BY: P. COWAN

CKD BY: P. COWAN

DATE 9/1/78

SCALE AS NOTED

Richard S. Cowan & Associates, Inc.

Architects and Engineers

Penn. Atn. Dr. • P.O. Box 558 • Quakertown, PA 18951

215/536/7075

DWG. NO. A3

OF 1