

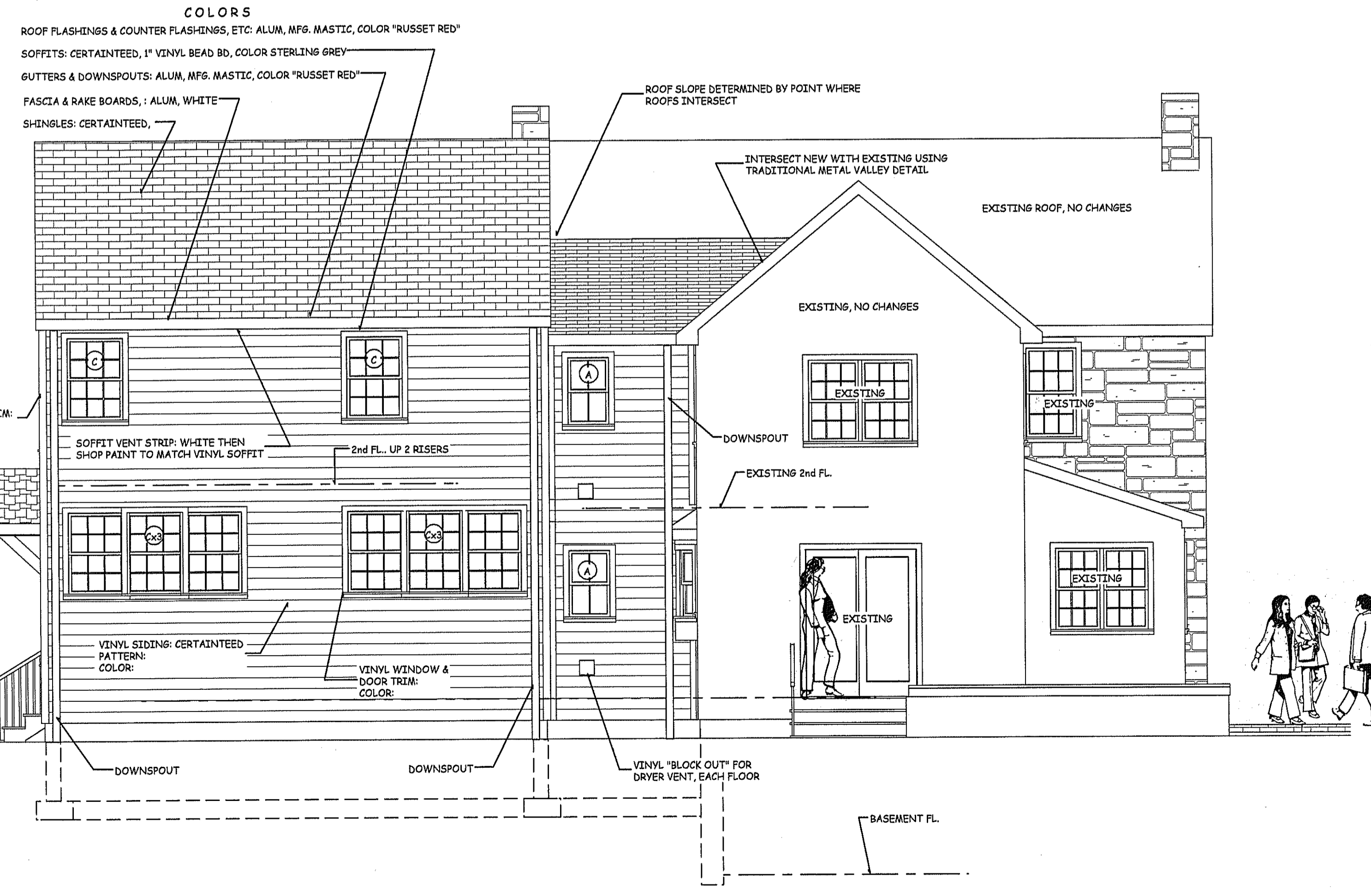
BLOCK IN EXISTING WINDOW. PARGE WITH 1/2\"/>

PROPOSED NEW LOCATION FOR ELECTRIC METER AND DATA ENTRANCE, COORDINATE FOR CONDUITS

WHERE NEW FRAMING ENGAGES STONE: TYPICAL PRESSURE TREATED STUD OR RAFTER SHALL BE PLUMB AND TRUE AND SPACED MIN OF 1\"/>

- ANDERSEN WINDOWS**
- (A) TW18210 DBL. HUNG
 - (B) TW2436 DBL. HUNG
 - (C) TW210410 DBL. HUNG EGRESS WINDOW
- SEE OTHER NOTES FOR COLORS AND FEATURES

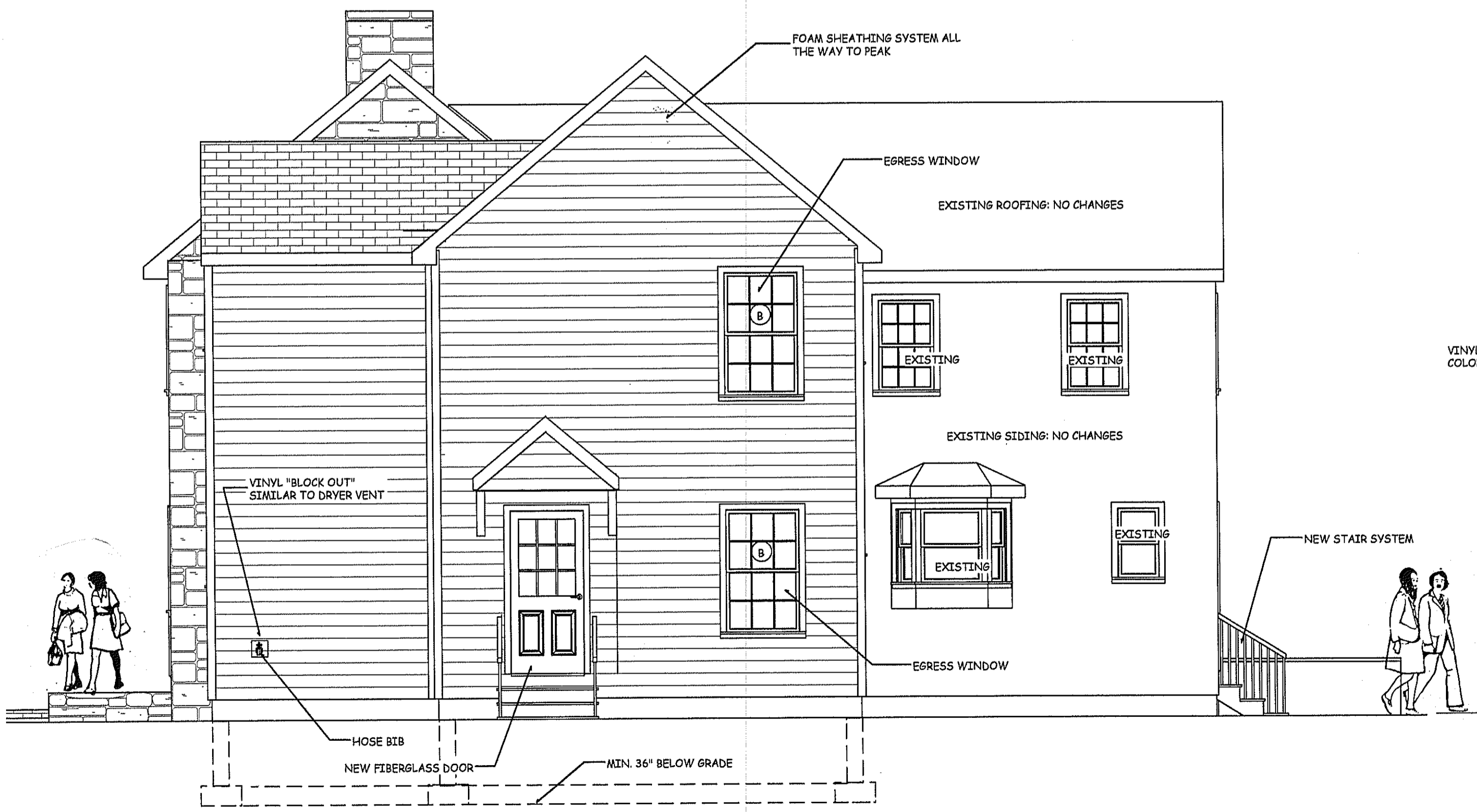
2 SOUTH ELEVATION "SHELL" PHASE



1 NORTH ELEVATION "SHELL" PHASE

SCALE 1/4" = 1'-0"

3 EAST ELEVATION "SHELL" PHASE



3 EAST ELEVATION "SHELL" PHASE

DATE	DESCRIPTION
JUNE 25, 2012	START UP FOR SHELL PERMITS
AUG. 03, 2012	

ONLY VALID FOR PERMITS w/ EMBOSSED SEAL & ORIGINAL "RED" SIGNATURE

Eric C. Van Reed, Architect
Creative Design Associates, Inc.
 ARCHITECTURE INTERIORS SITE & SPACE PLANNING
 950 Colburn Road
 Chalfont, PA 18914
 Phone: 215-472-1155
 www.ArchitectsVan.com

PHASE ONE: FOUNDATION & "SHELL" ONLY
 626 NORRISTOWN ROAD
 ADDITION & REPAIRS
 HORSHAM TOWNSHIP, MONTGOMERY CO., PA

Sheet No.
5
 Comm. No. 2012-2957 of 6