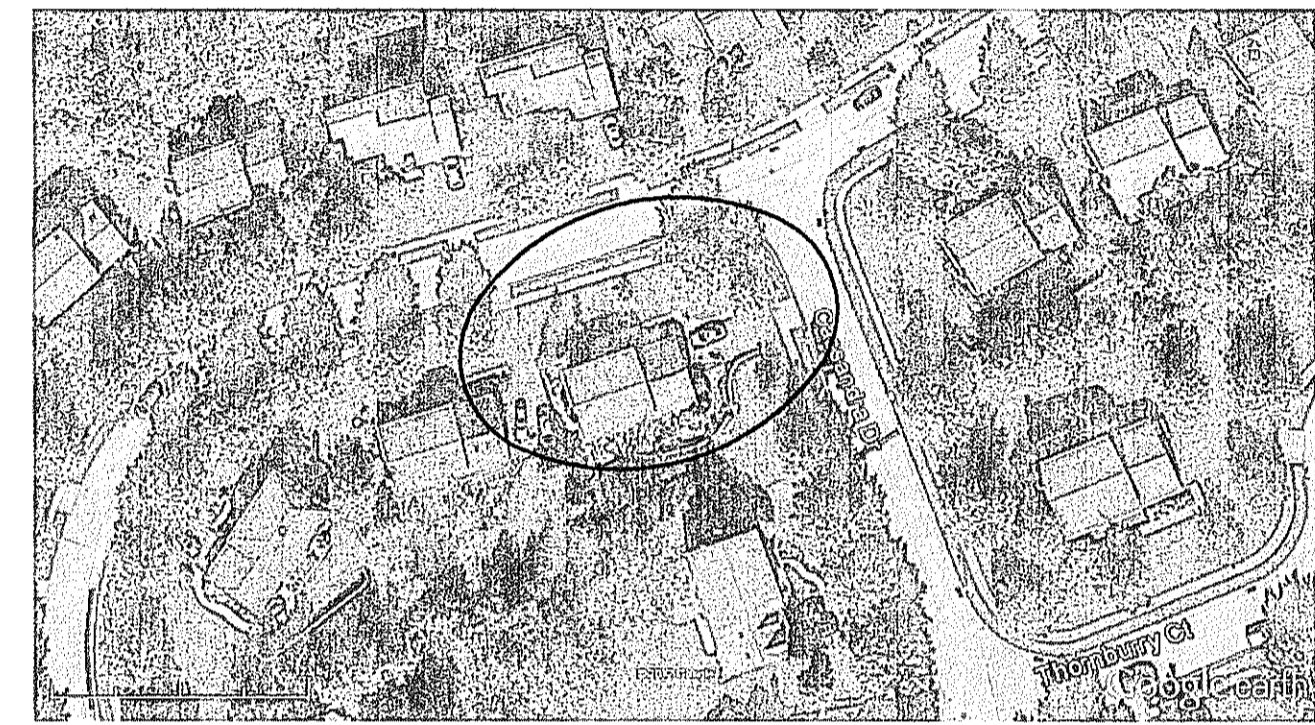


6 LOCATION MAP
NO SCALE

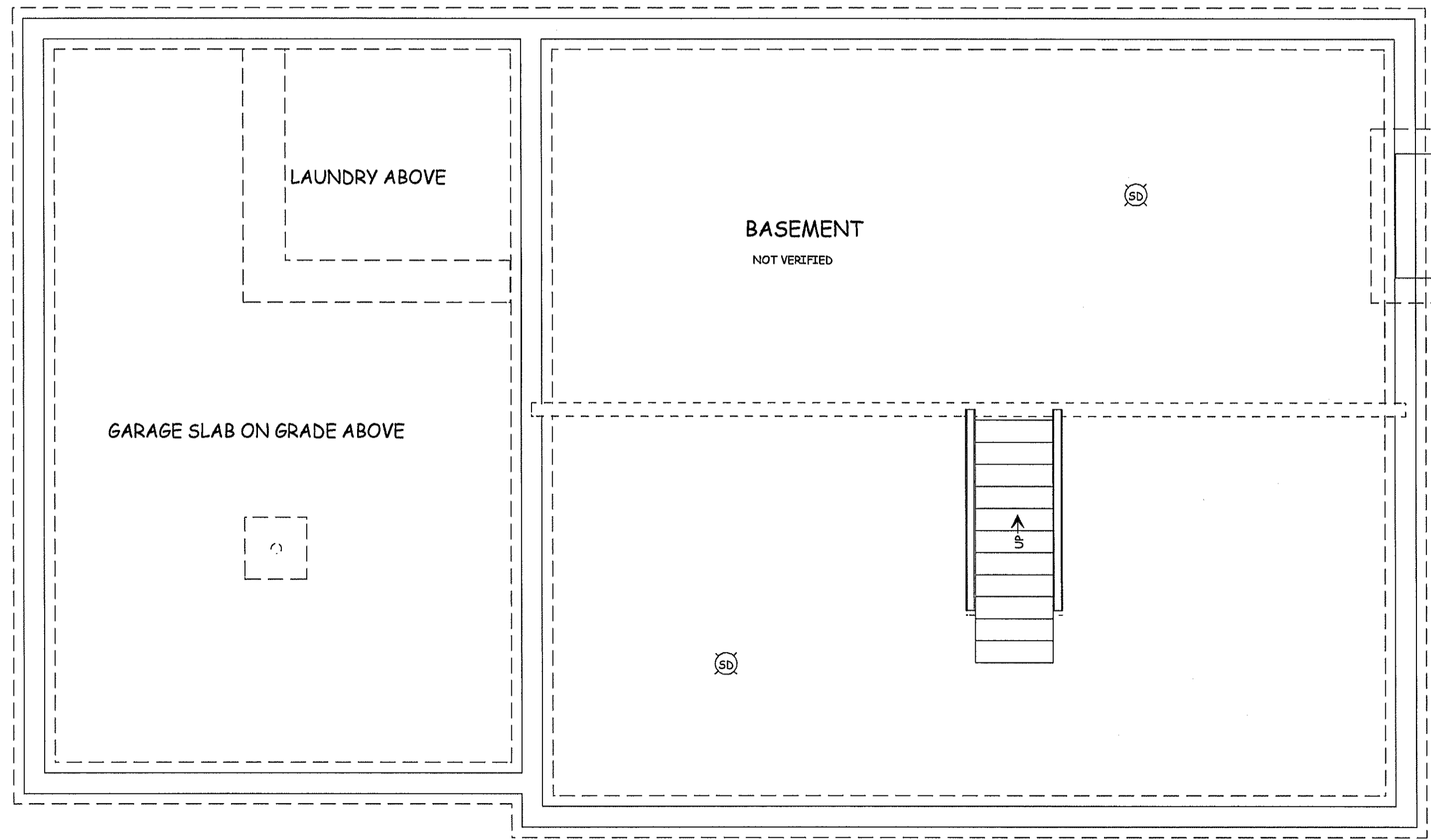


5 PROPERTY PLAN
NO SCALE

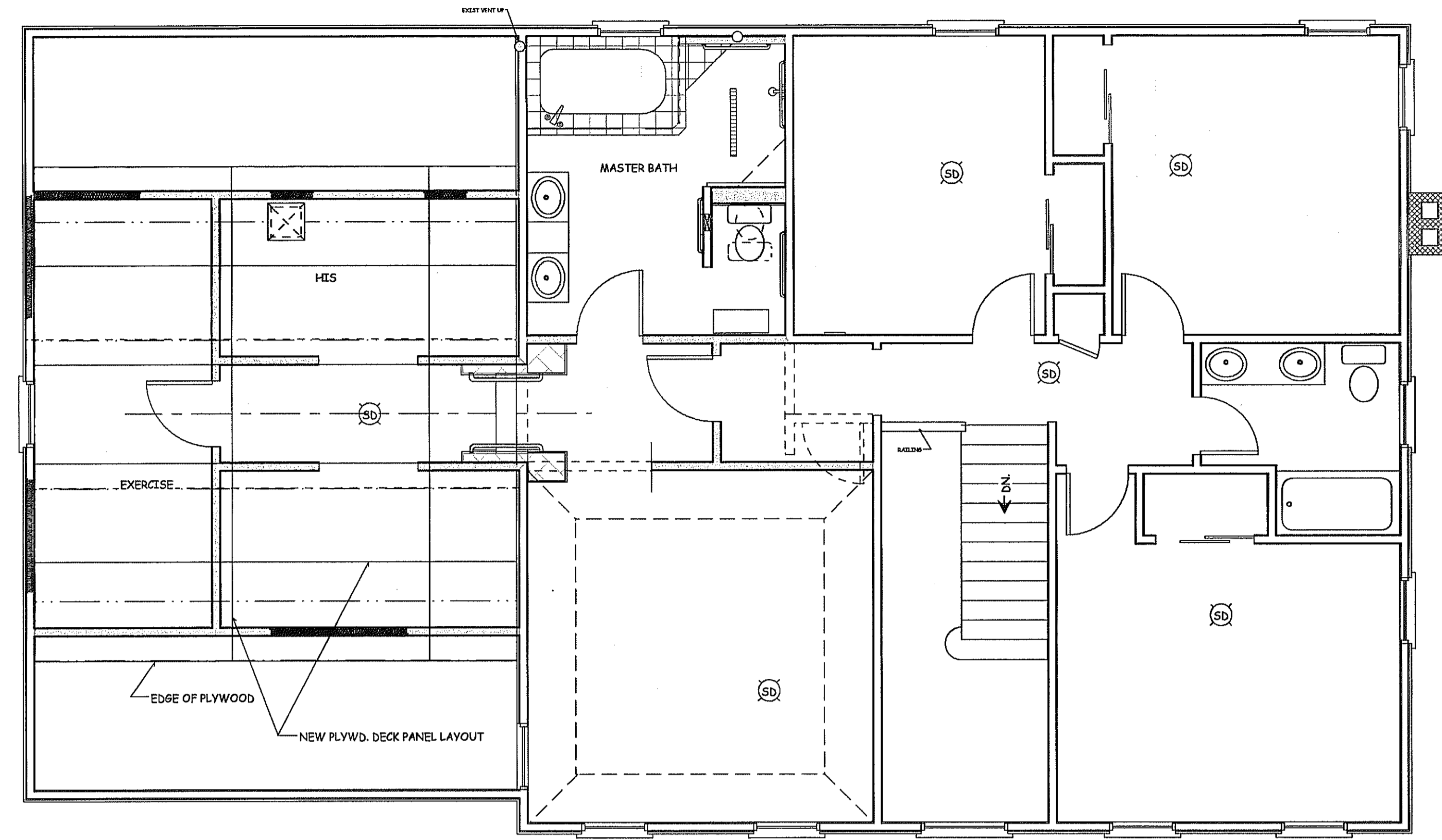
SITE NOTES
 NO CHANGES TO SITE.
 NO CHANGES TO BUILDING FOOTPRINT.
 NO CHANGES TO IMPERVIOUS SURFACE.

GENERAL PROJECT DESCRIPTION
 PROJECT IN THREE PARTS.
 FIRST IS RELOCATION OF THE MASTER BEDROOM ENTRANCE DOOR.
 SECOND IS THE REFINISHING OF THE ENTIRE MASTER BATH. INCLUDES ALL NEW PLUMBING FIXTURES, IN SAME LOCATIONS.
 THIRD IS EXPANDING THE MASTER SUITE CLOSET SPACE INTO THE EXISTING GARAGE ATTIC.

4 NOTES

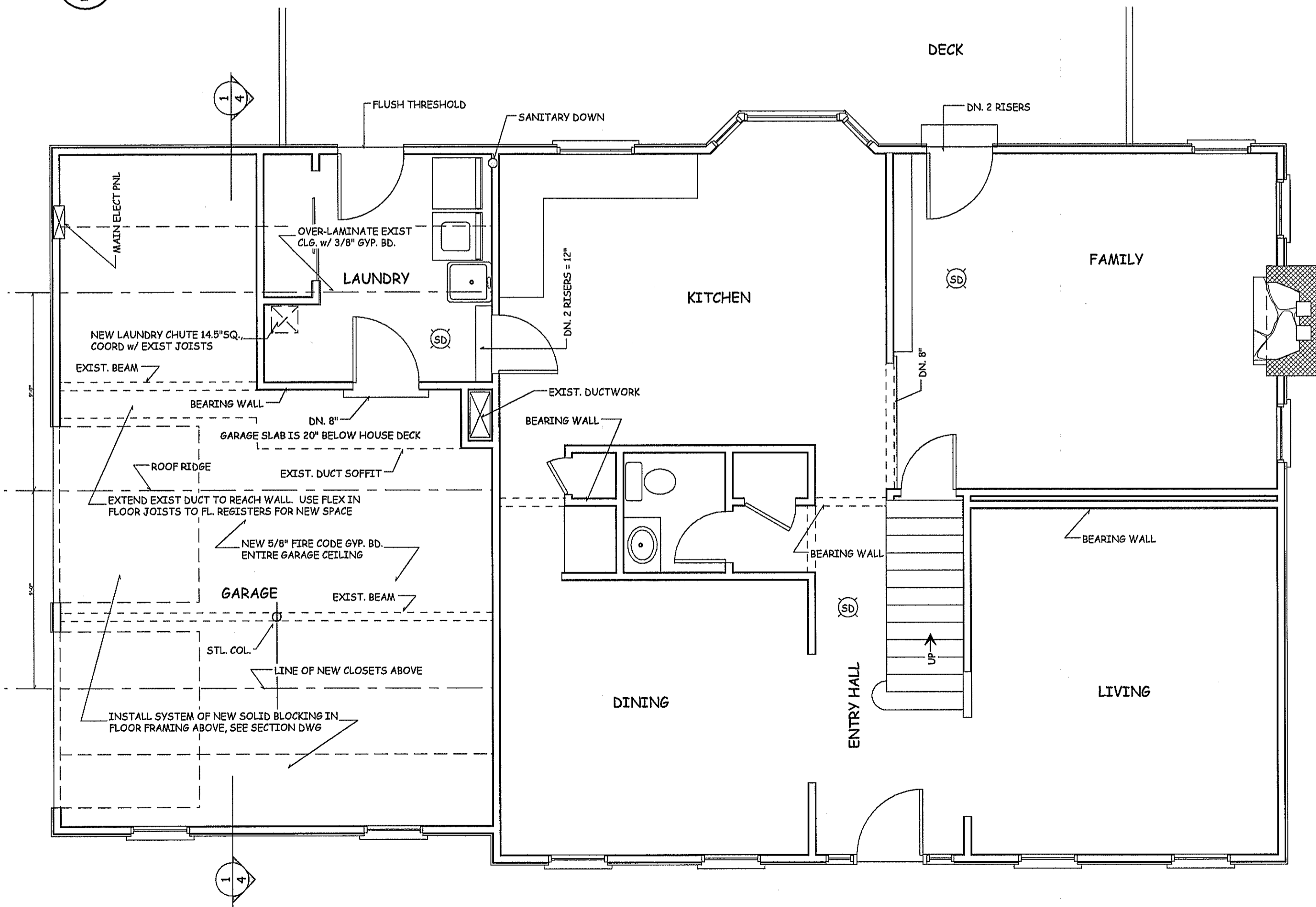


2 PROPOSED BASEMENT PLAN
SCALE 1/4" = 1'-0"



SEE SHEET 3, 1/2" SCALE FLOOR PLAN FOR DETAILS

3 PROPOSED SECOND FLOOR PLAN



1 PROPOSED FIRST FLOOR PLAN
SCALE 1/4" = 1'-0"

SEE THESE DRAWINGS FOR SMOKE DETECTOR LOCATIONS. VERIFY WITH MUNICIPALITY IF ANY AMMENDMENTS TO CODE. SYSTEM SHALL BE "INTERCONNECTED" USING PHOTOELECTRIC AND ION DETECTOR TECHNOLOGY, COMBINED IN INDIVIDUAL UNITS.

REV.#	REVISION DESCRIPTION	DATE
1	START UP	JULY 13, 2012
2	PROGRESS PRINTING	OCT. 05, 2012
3	UPDATED	DEC. 01, 2012

ONLY VALID FOR PERMITS w/ EMBOSSED SEAL & ORIGINAL "RED" SIGNATURE

Eric C. Van Reed, Architect
Creative Design Associates, Inc.
 ARCHITECTURE INTERIORS SITE & SPACE PLANNING
 350 Callowhill Road
 Chalfont, PA 18914
 Voice: 215-672-1155
 www.ArchitectVision.com

211 CASSANDRA
MASTER SUITE ALTERATIONS
 NEW BRITAIN TOWNSHIP, BUCKS CO., PA