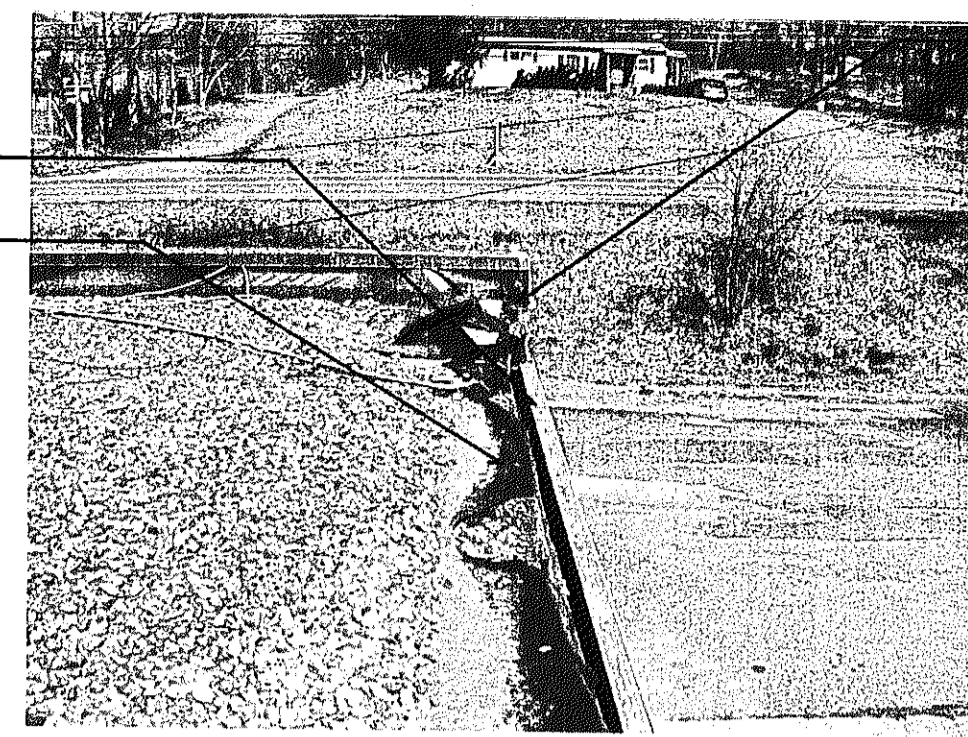
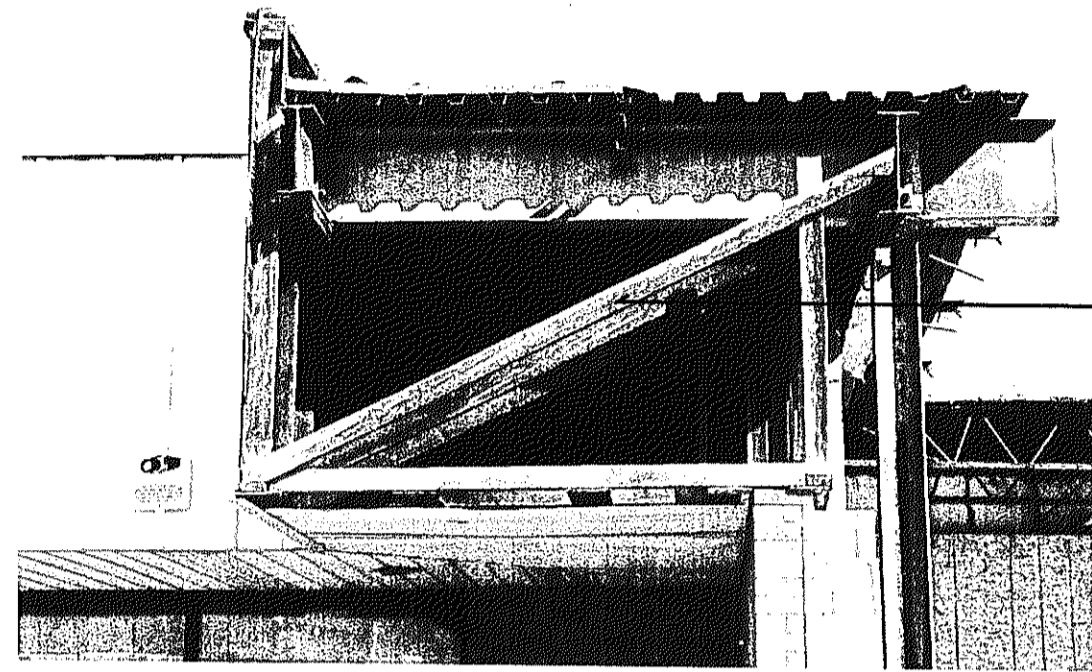


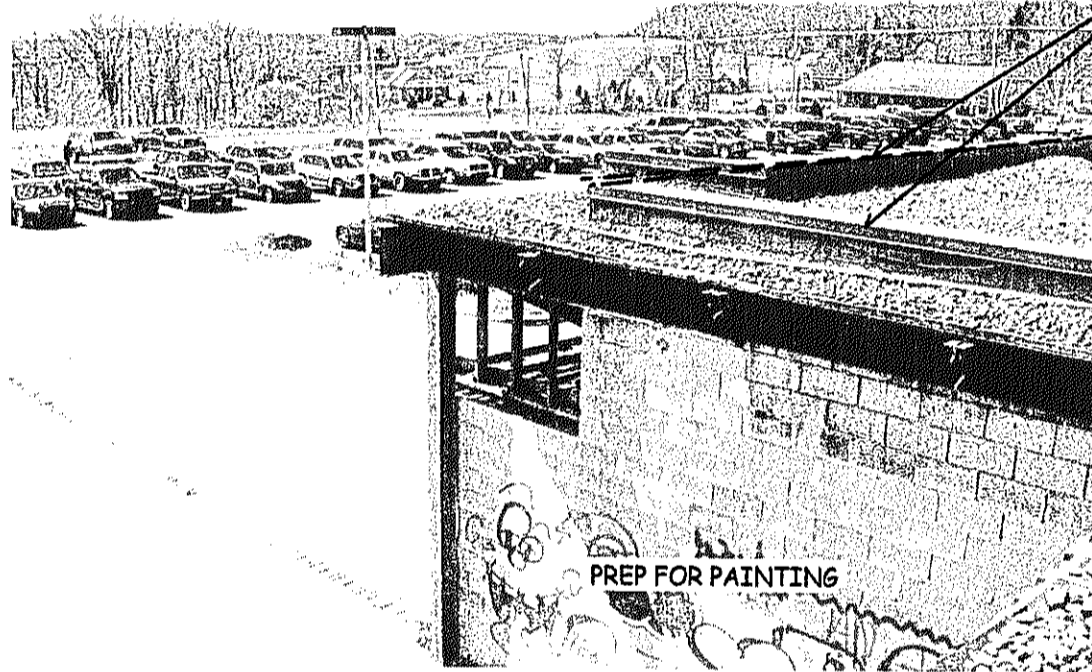
NEW SITE BRAKE FORMED FLASHING ALL DOWN THIS WALL, FRONT TO BACK
 POST FIRE CLOSURE WALL REMAINS
 PULL ROOFING BACK, "BRIDGE" LEVEL TO WALL, INSTALL DRIP EDGE FLASHING, INSTALL 6" "K" GUTTER
 CLEAN UP THIS CORNER, PAINT



ROOFING: CLEAN THIS UP



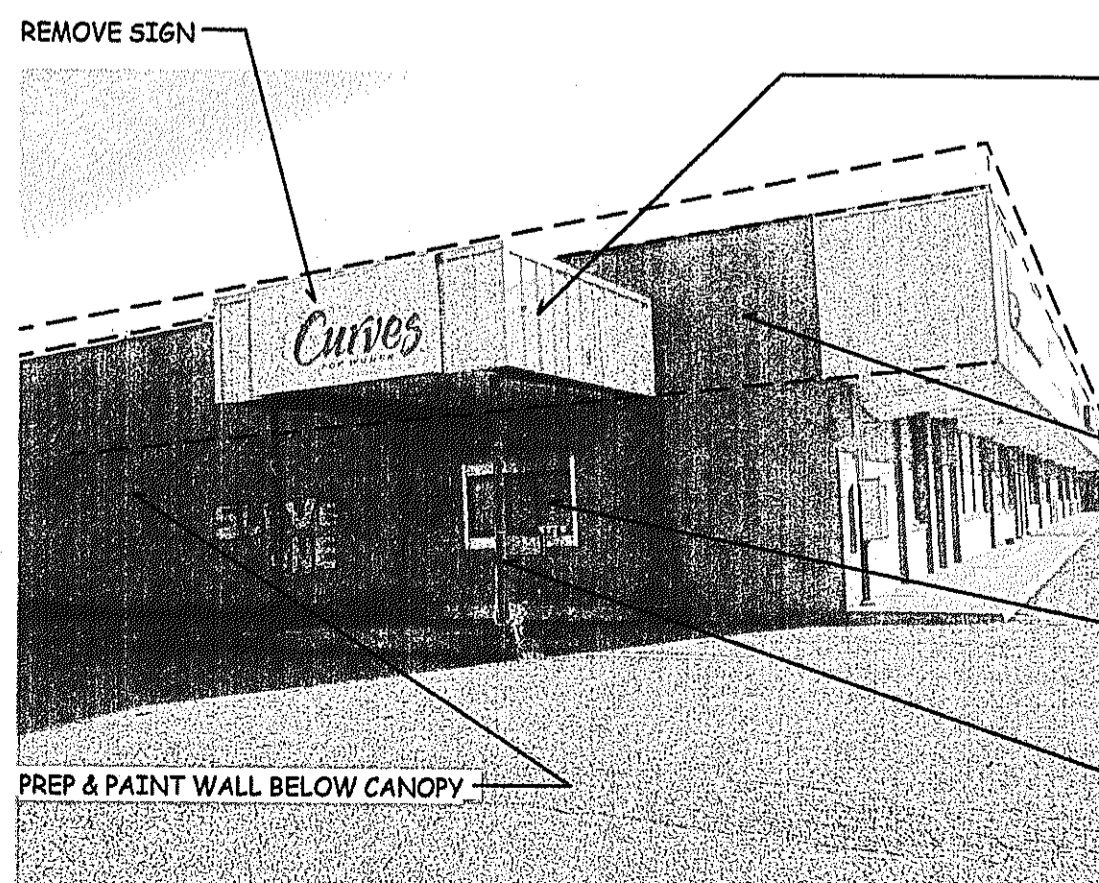
CLOSE THIS OFF, WRAP WITH EFIS.



CONNECT FRONT PARAPET TO SIDE PARAPET OF STORE(S) ROOF, REMOVE THE REST
 PREP FOR PAINTING



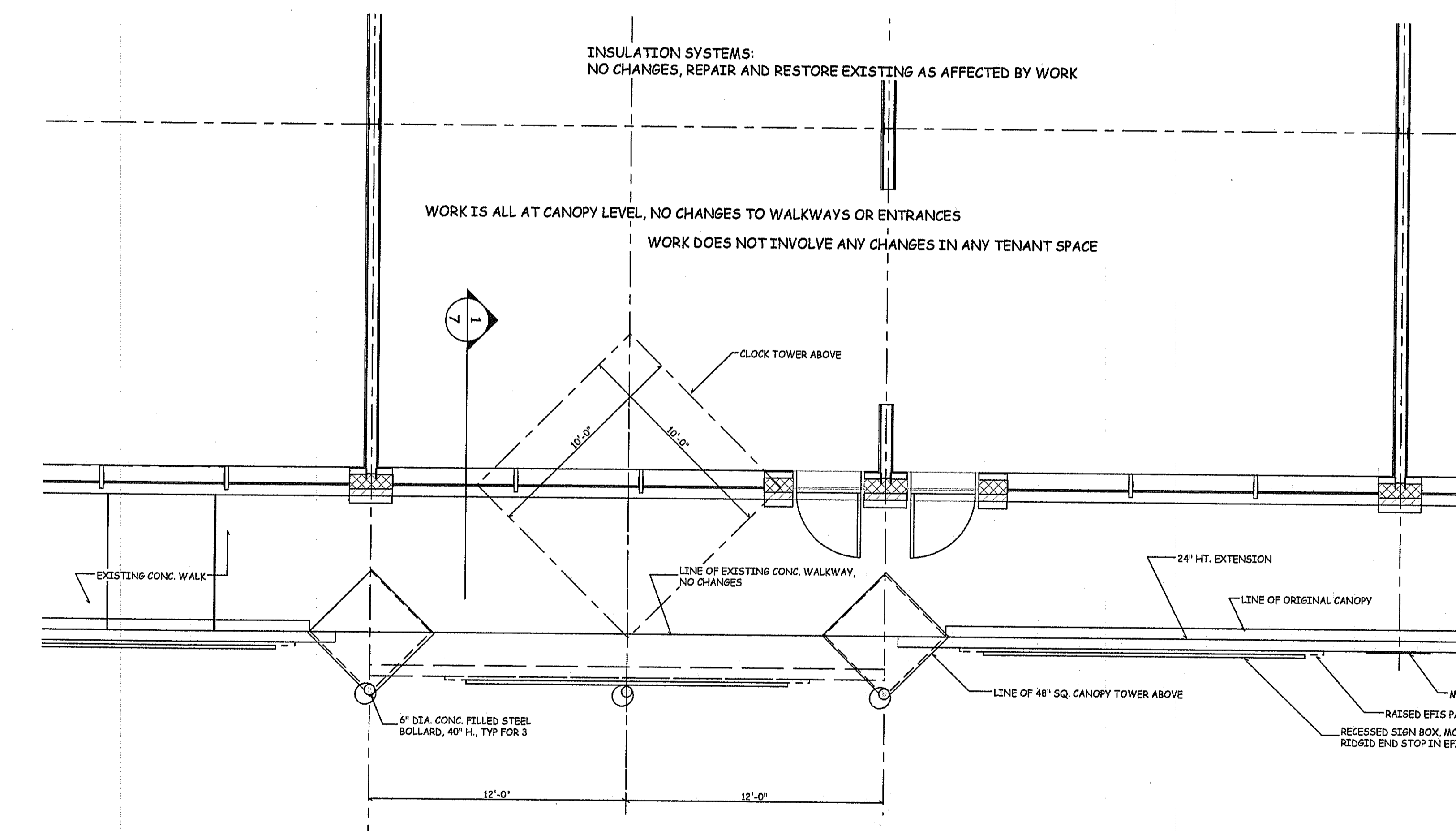
KEEP STEEL, PAINT WITH WALL
 FIBER CEMENT SIDING PANELS, PAINTED
 IN GENERAL, THIS CORNER, NO CHANGES, CLEAN IT UP, MINIMUM PREP, PAINT



REMOVE SIGN
 WEST CANOPY REMAINS, APPLY NEW FINISH SYSTEM SAME AS FRONT
 FRONT CANOPY, WITH EXTENDED HEIGHT, TO TURN CORNER AND FINISH AT REAR WALL
 OPTION: INSTALL "REMOVABLE" PANEL OVER FORMER BANK WINDOW, PAINT WITH WALL BELOW
 PAINT SUPPORT COLUMNS
 PREP & PAINT WALL BELOW CANOPY

2
5

ROOF "BLOW UP" PLAN AT CENTRAL FACADE FEATURE



1
5

PLAN "BLOW UP" PLAN AT CENTRAL FACADE FEATURE

SCALE: 1/4" = 1'-0"

REV. #	REVISION DESCRIPTION	DATE
1	INTRO & START UP	NOV. 01, 2011
2	PERMIT SUBMISSION	APRIL 20, 2012
3	UPDATES	MAY 04, 2012

ONLY VALID FOR PERMITS w/ EMBOSSED SEAL & ORIGINAL "RED" SIGNATURE

Eric C. Van Reed, Architect
Creative Design Associates, Inc.
 ARCHITECTURE INTERIORS SITE & SPACE PLANNING
 350 Callowhill Road
 Chalfont, PA 18914
 PA# RA008011X NJ# 21A00098100
 Voice: 215-872-1155
 www.ArchitectVision.com

EXTERIOR FACADE - "FACELIFT"
 M. T. EFFORT PLAZA
 PENNSYLVANIA 115, EFFORT, PA
 Chestnut Hill Township, Monroe County, PA.

Sheet No.

5

Comm. No. 2011-2938 of