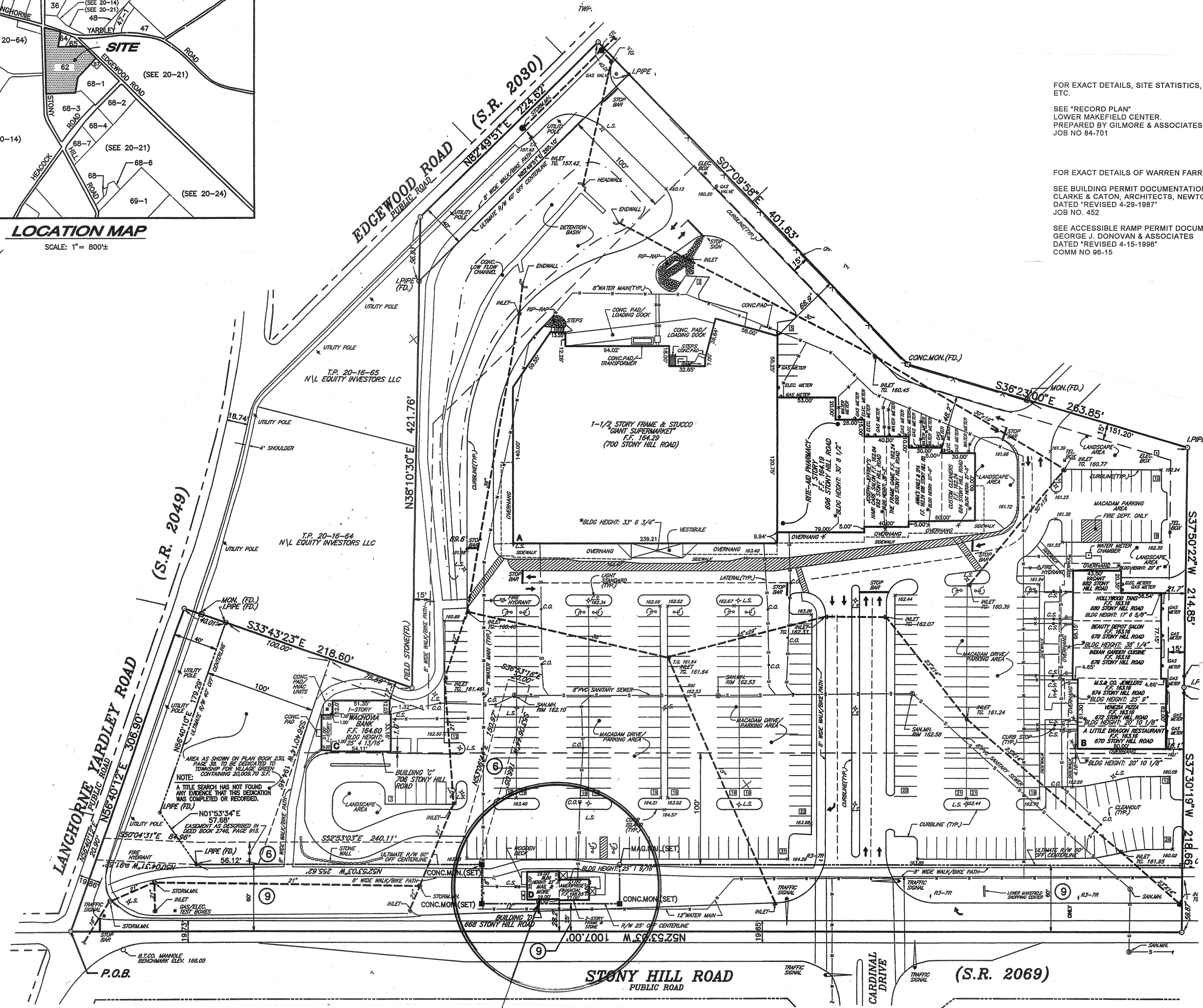


LOCATION MAP
SCALE: 1" = 800'



FOR EXACT DETAILS, SITE STATISTICS, IMPROVEMENTS, ZONING, ETC.
SEE "RECORD PLAN"
LOWER MAKEFIELD CENTER.
PREPARED BY GILMORE & ASSOCIATES INC., DATED 07-23-1984,
JOB NO 84-701

FOR EXACT DETAILS OF WARREN FARRINGER HOUSE,
SEE BUILDING PERMIT DOCUMENTATION BY
CLARKE & CATON, ARCHITECTS, NEWTOWN, PA
DATED "REVISED 4-28-1987"
JOB NO. 452
SEE ACCESSIBLE RAMP PERMIT DOCUMENTATION BY
GEORGE J. DONOVAN & ASSOCIATES
DATED "REVISED 4-15-1996"
COMM NO 96-15

1
1

**WARREN FARRINGER HOUSE
SITE & LOCATION PLAN**

TAX PARCEL # 20-10-62



REV #	REVISION DESCRIPTION	DATE
START UP	100% PERMIT & HISTORIC REVIEW	MAY 21, 2010
	REVISIONS PER JAWIS REVIEW	FEB 22, 2011
		APR 4, 2011

VALID FOR PERMITS ONLY
WITH EMBOSSED SEAL &
ORIGINAL SIGNATURE IN RED

D. Wesley Rapp
General Contracting & Building
528 Davisville Road
Willow Grove, PA 19090
Voice: 215-657-6093
Fax: 215-657-8018

Eric C. Van Reed, Architect
Creative Design Assoc. Inc.
ARCHITECTURE, INTERIORS, SITE & SPACE PLANNING
350 Callowhill Road
Chalfont, PA 18914
Voice: 215-672-1155
www.ArchitectVision.com

Lower Makefield Center
Warren Farringer House-Repairs
LOWER MAKEFIELD TWP., BUCKS CO., PA

Sheet No.
1
Comm. No.
2010-2919 of

SITE & LOCATION