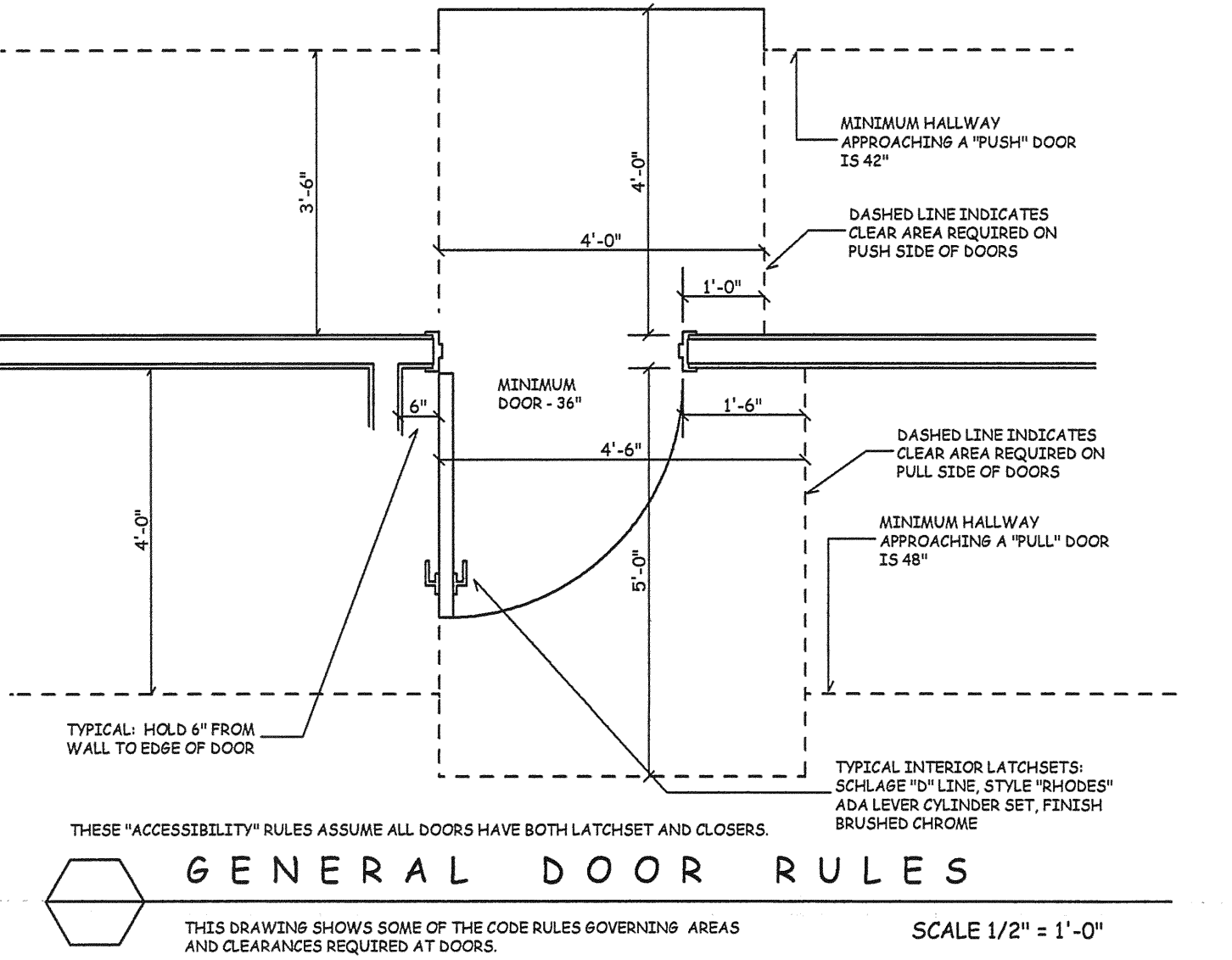
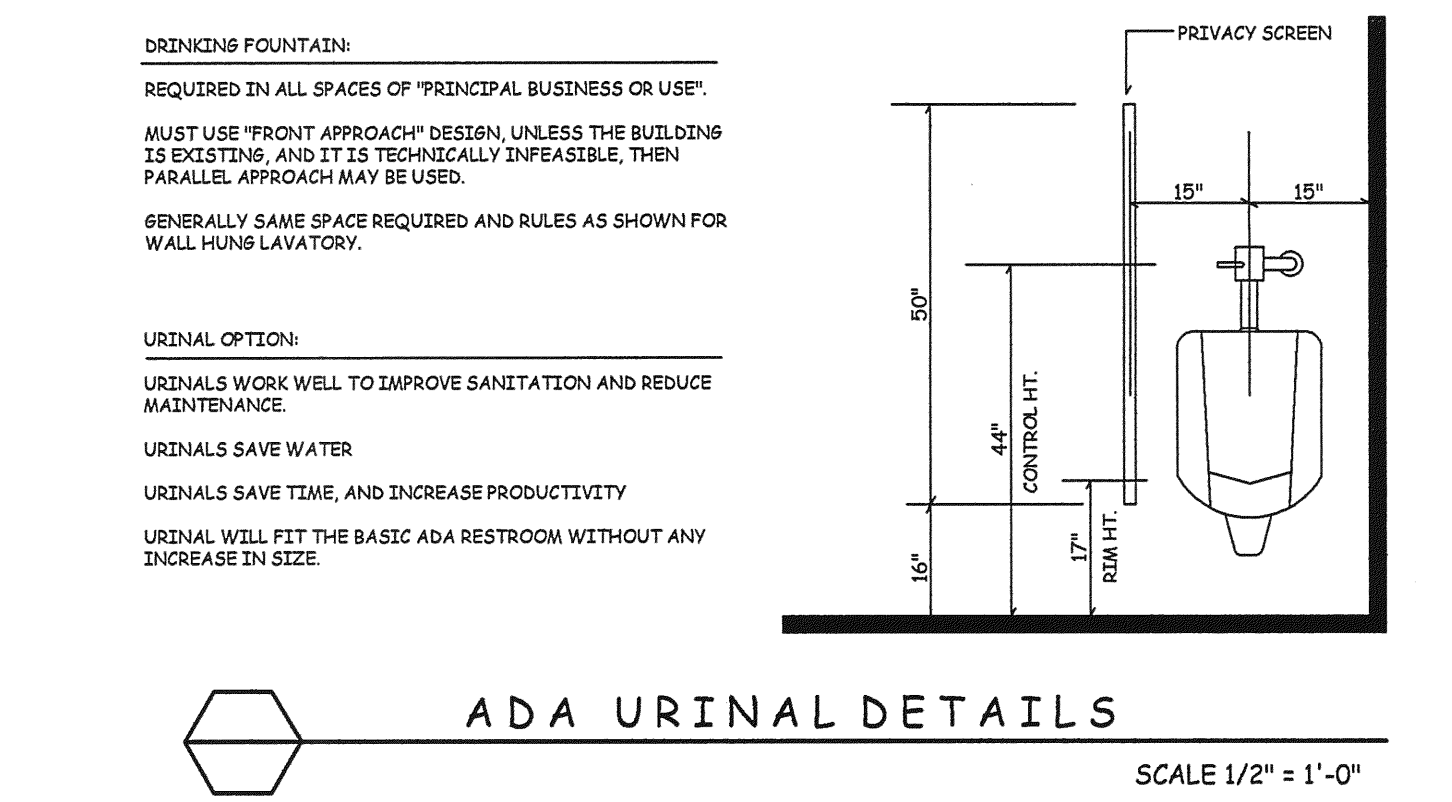
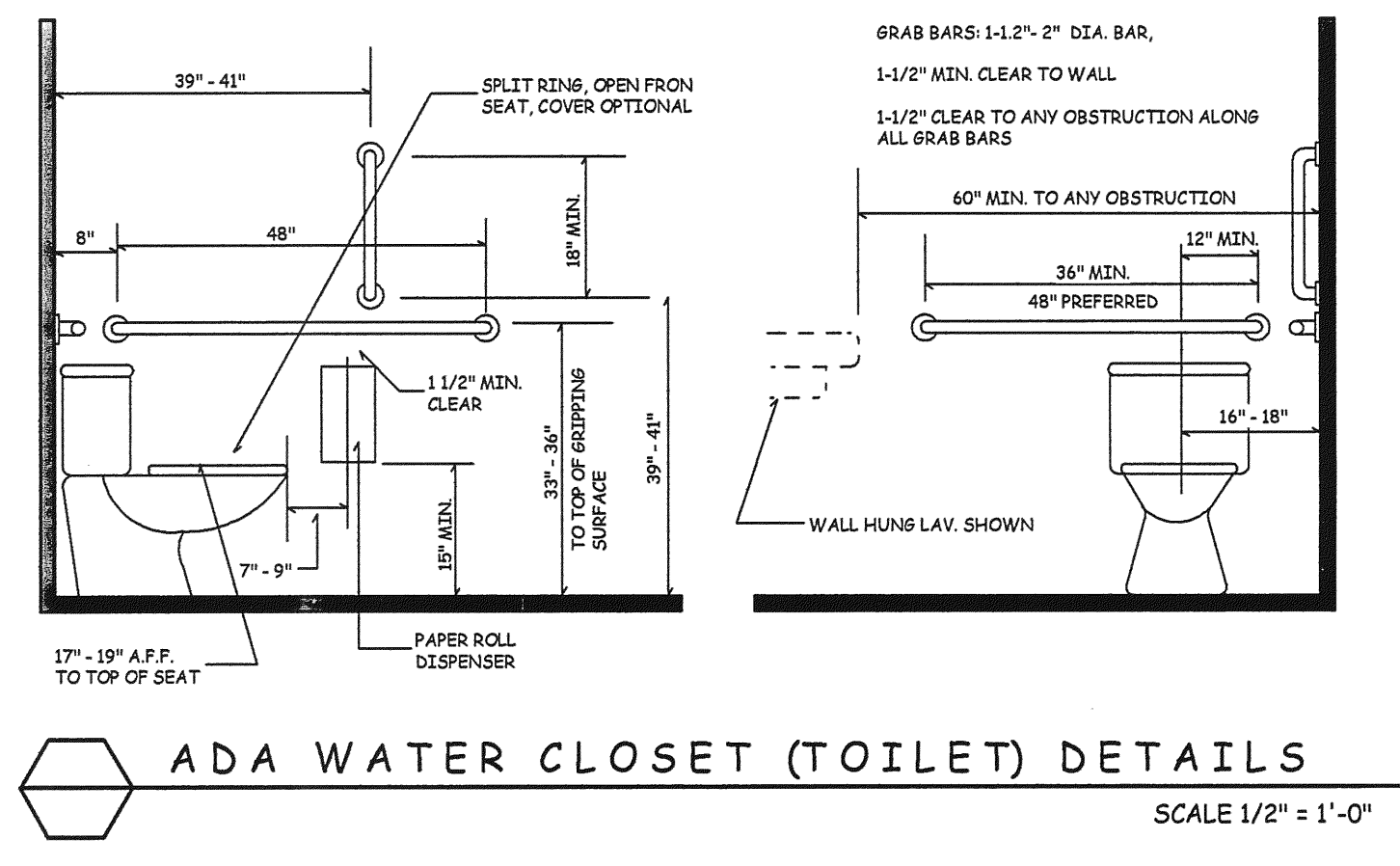
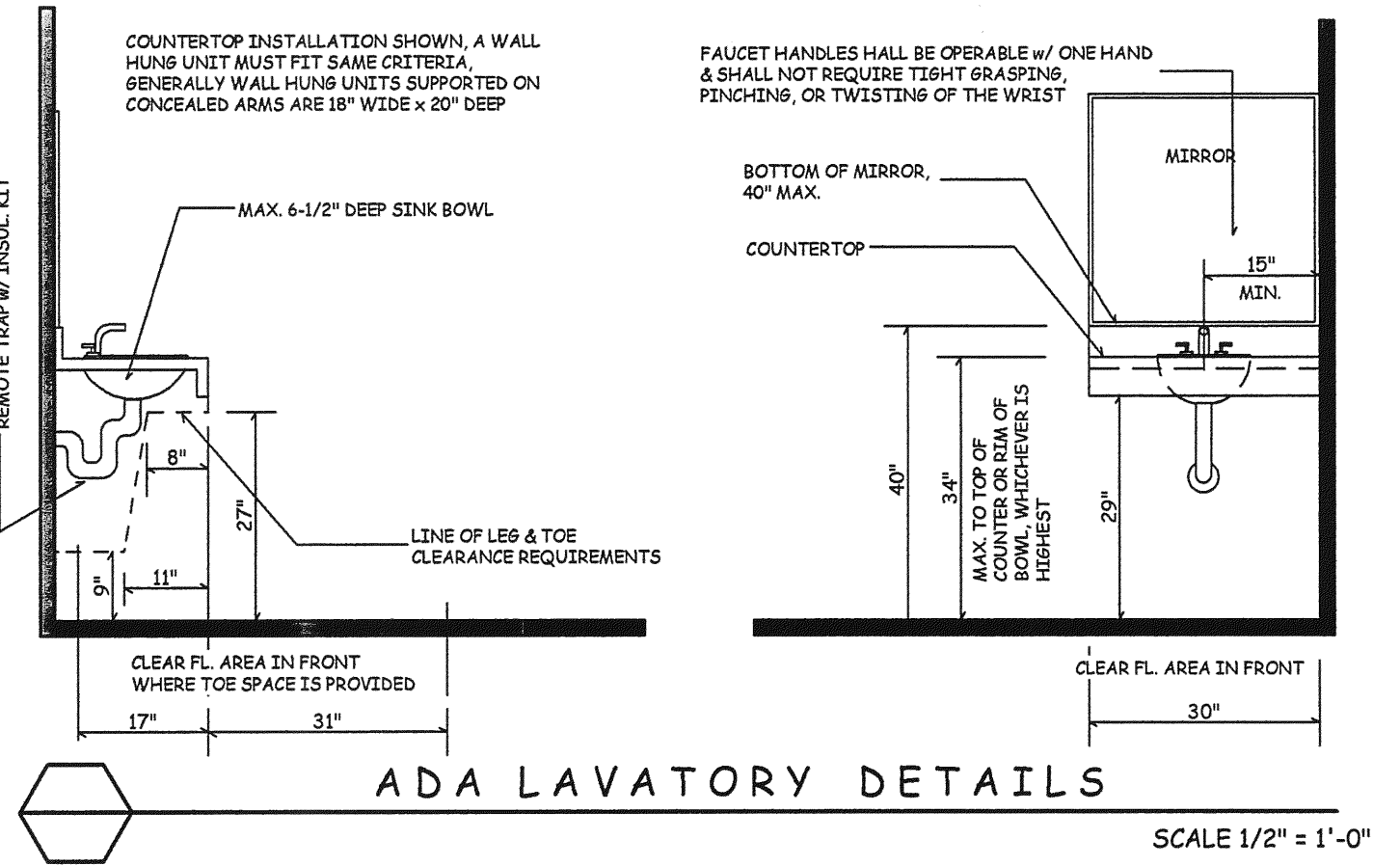
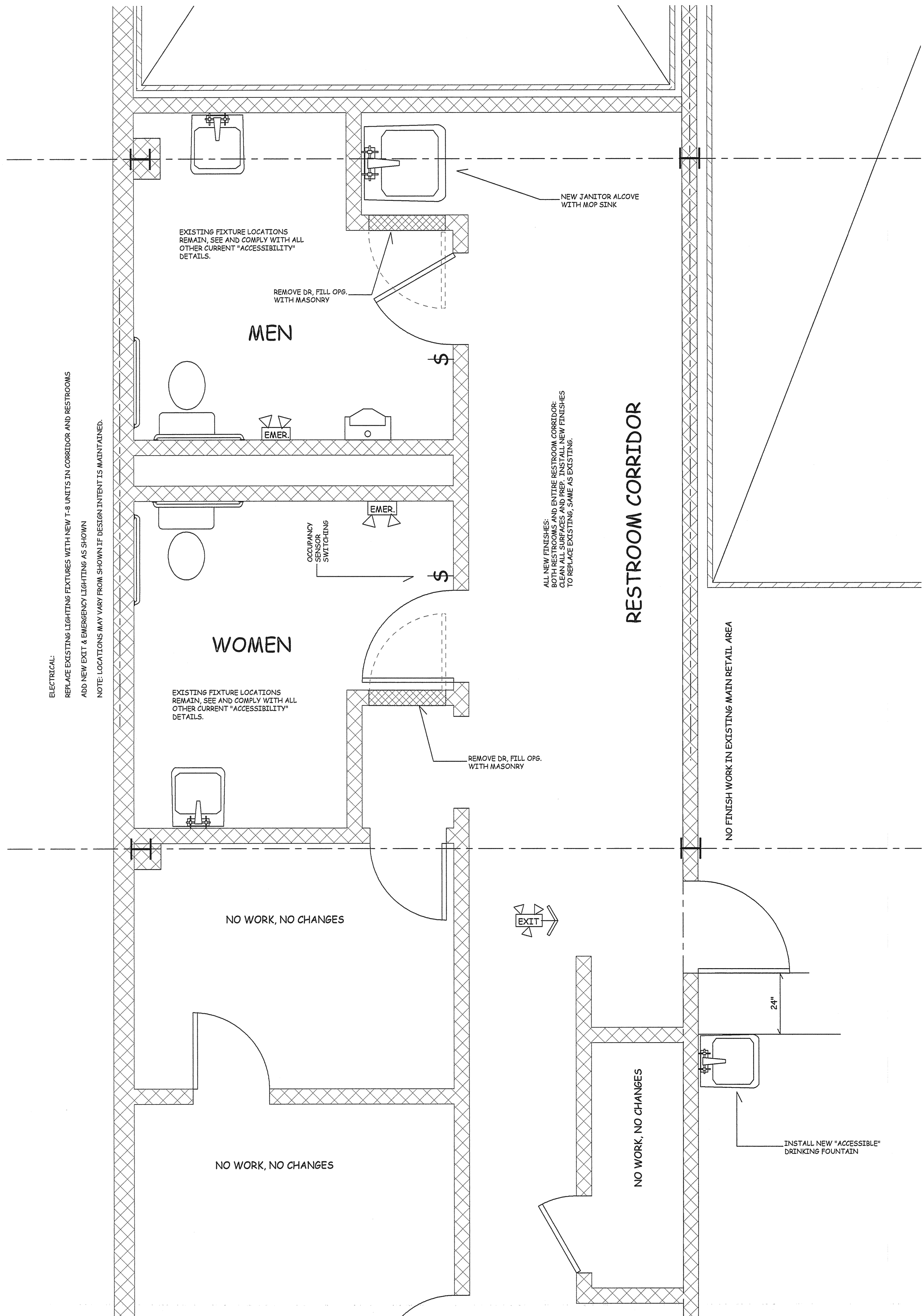


#	DESCRIPTION
1	SITE PLAN AND CODE NOTES
2	EXISTING FLOOR PLAN
3	PROPOSED FLOOR PLAN
4	ELEVATIONS & DETAILS
5	ELECTRICAL DESCRIPTIONS
6	ACCESSIBILITY DETAILS & RESTROOM ALTERATIONS
FP-1	SPRINKLER DRAWING



1
6

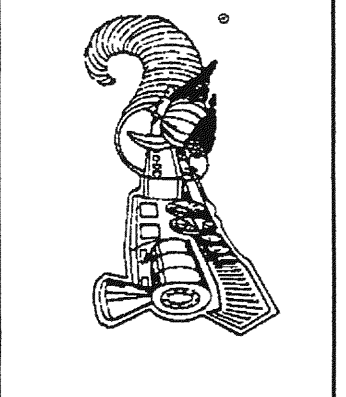
EXISTING RESTROOM ALTERATIONS

SCALE 1/2" = 1'-0"

REV. #	REVISION DESCRIPTION	DATE
01	START UP FOR PERMITS & PROGRESS PRINTING	09-23-2009
02	ADJUSTED FOR "ACCESSIBILITY" REVIEW	12-04-2009
03	UPDATES FROM PERMIT TITLING	02-08-2010
04	UPDATES FROM L.A.T. ACCESSIBILITY REVIEW	03-31-2010
05	UPDATES FROM L.A.T. ACCESSIBILITY REVIEW	04-22-2010
06	UPDATES FROM L.A.T. ACCESSIBILITY REVIEW	05-27-2010

PLAN INVALID UNLESS AFFIXED WITH EMBOSSED SEAL & RED SIGNATURE

Eric C. Van Reed, Architect
Creative Design Associates, Inc.
 ARCHITECTURE INTERIORS PLANNING
 350 Callowhill Road
 Chalfont, PA 18914
 Voice: 215-672-1155
 www.ArchitectVision.com



265 South Easton Road
 ALTERATIONS for PRODUCE JUNCTION
 CHELTENHAM TWP., MONTGOMERY CO., PA

Sheet No.
 6
 Comm. No.
 2009-2905 of 6