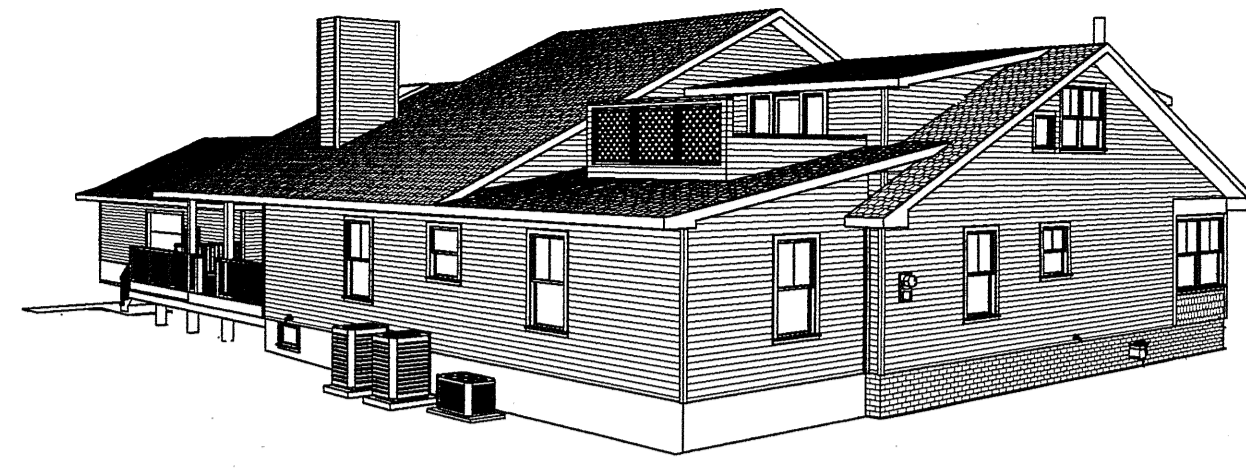
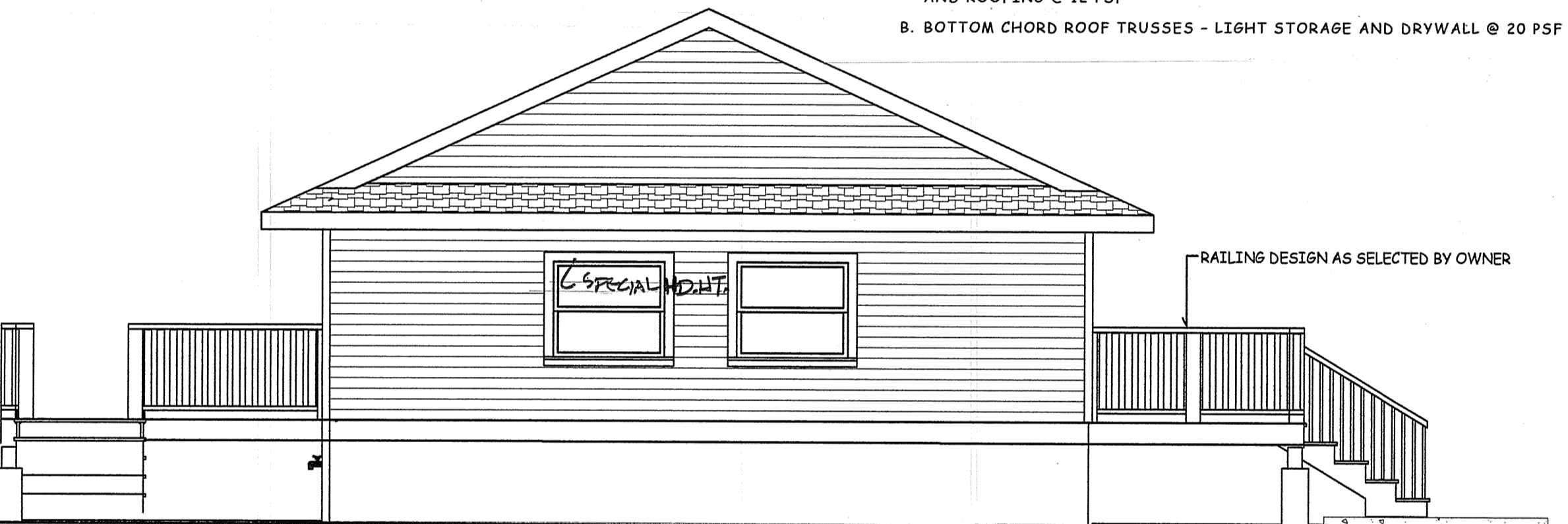


PERSPECTIVE VIEWS ARE FOR QUICK GRASP OF PROJECT, SEE PLANS AND ELEVATIONS FOR DETAILS.



PREFABRICATED WOOD TRUSSES

- STANDARD: SPECIFICATION FOR METAL PLATE CONNECTED WOOD TRUSSES PUBLISHED BY TRUSS PLATE INSTITUTE (TPI). QUALITY CONTROL MANUAL PUBLISHED BY TPI.
- WOOD STRUCTURAL DESIGN STANDARD: NATIONAL DESIGN SPECIFICATION FOR WOOD CONSTRUCTION PUBLISHED BY N.F.P.A.
- LUMBER: PROVIDE LUMBER GRADED BY A RECOGNIZED AGENCY, WITH RULES AND SERVICE COMPLYING WITH REQUIREMENTS OF AMERICAN LUMBER STANDARDS COMMITTEE AND PS 20. USE ONLY LUMBER PIECES WHICH BEAR INSPECTION SERVICE GRADE MARK.
- FABRICATOR'S QUALIFICATIONS: MINIMUM OF 3 YEARS EXPERIENCE IN SUCCESSFUL FABRICATION OF TRUSSES COMPARABLE TO TYPE INDICATED FOR THIS PROJECT.
- SHOP DRAWINGS: PROVIDE, SHOWING SPECIES, SIZES AND STRESS GRADES OF LUMBER TO BE USED; PITCH, SPAN, CONFIGURATION AND SPACING FOR EACH TYPE OF TRUSS REQUIRED, TYPE, SIZE, MATERIAL, FINISH, DESIGN VALUES, AND LOCATION OF METAL CONNECTOR PLATES; AND BEARING AND ANCHORAGE DETAILS SHALL BE SUBMITTED FOR REVIEW BY ARCHITECT BEFORE FABRICATION OF TRUSSES.
- CERTIFICATION: SHOP DRAWINGS MUST BEAR THE SEAL OF A PENNSYLVANIA REGISTERED PROFESSIONAL ENGINEER.
- LOADING: LIVE + DEAD LOADS FOR EASTERN PA.
 - TOP CHORD ROOF TRUSSES - LIVE LOAD 30 PSF + DEAD LOAD TRUSSES + SHEATHING AND ROOFING @ 12 PSF
 - BOTTOM CHORD ROOF TRUSSES - LIGHT STORAGE AND DRYWALL @ 20 PSF

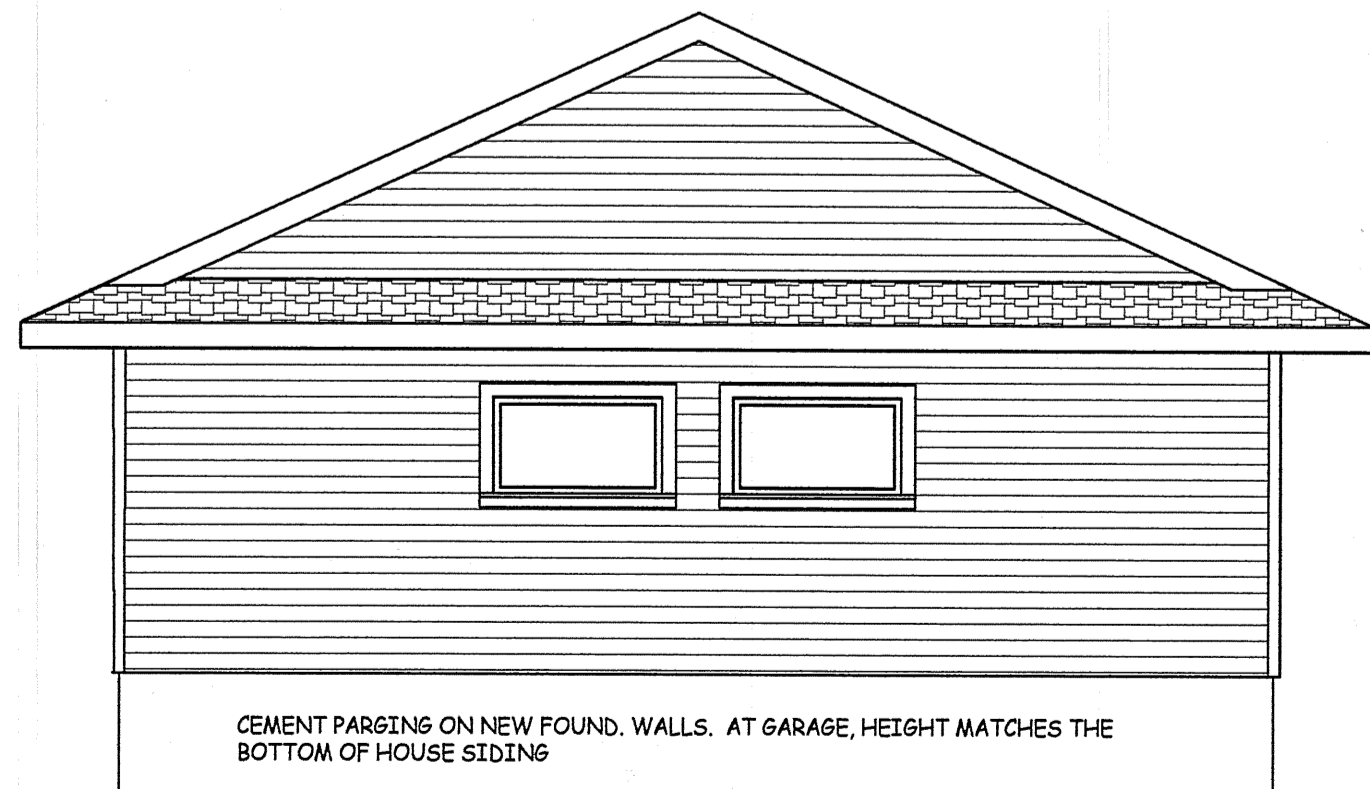


4
8 WEST FACING GARAGE - FROM DECK

SCALE 1/4" = 1'-0"

INDEX OF DRAWINGS

SHEET #	DESCRIPTION
1	EXISTING CONDITIONS - HOUSE
2	EXISTING SITE PLAN
3	PROPOSED SITE PLAN & NOTES
4	NEW FIRST FLOOR PLAN
5	NEW FOUNDATION & BASEMENT PLAN
6	NEW SECOND FLOOR PLAN
7	ELEVATIONS: FRONT & REAR
8	ELEVATIONS: SIDE & GARAGE
9	1/2" BLDG. SECTION @ EXISTING
10	1/2" BLDG. SECTION @ ADDITION
11	ELECTRICAL: FIRST FLOOR PLAN
12	ELECTRICAL: FOUNDATION & BASEMENT PLAN
13	ELECTRICAL: SECOND FLOOR PLAN
14	KITCHEN & CASEWORK



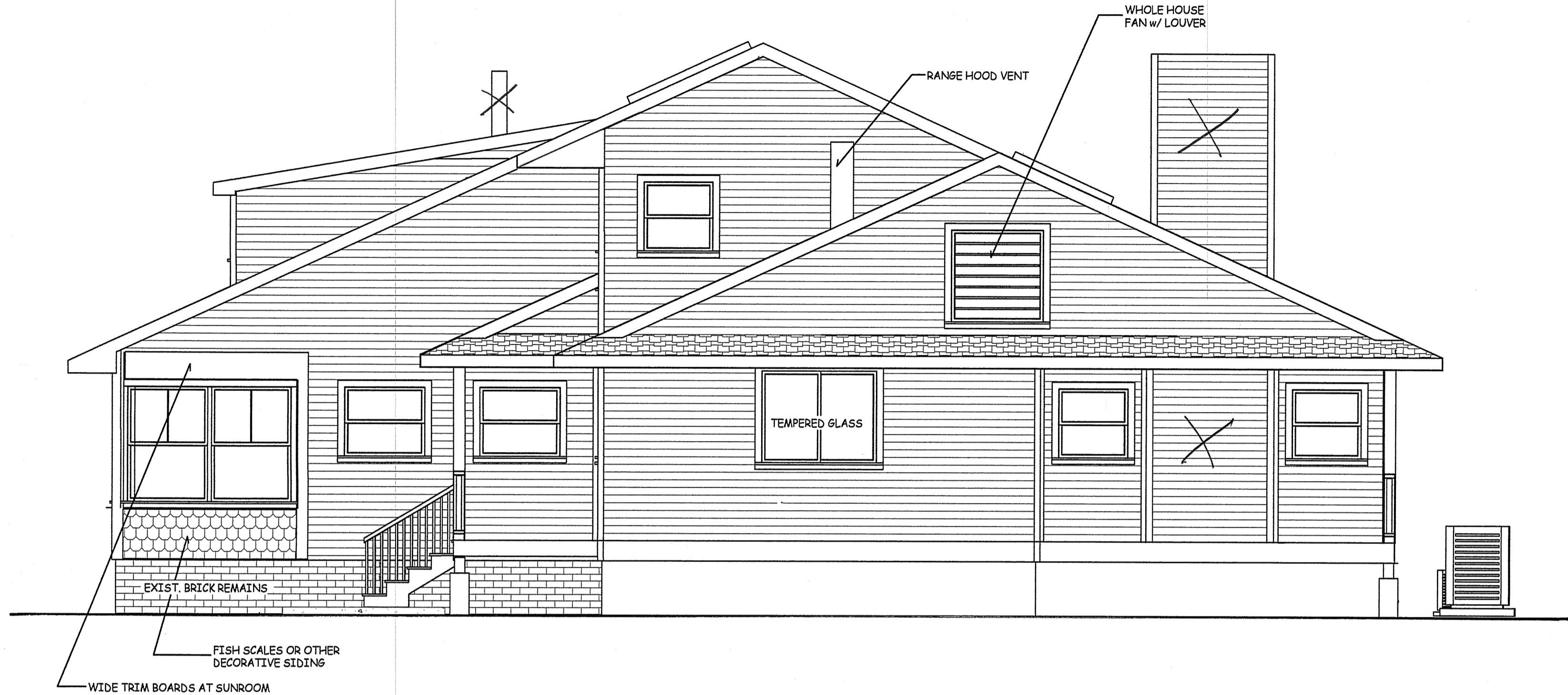
CEMENT PARING ON NEW FOUND. WALLS. AT GARAGE, HEIGHT MATCHES THE BOTTOM OF HOUSE SIDING

3
8 EAST FACING GARAGE - RIGHT SIDE

SCALE 1/4" = 1'-0"

RADIANT BARRIER

- RADIANT BARRIERS ARE REFLECTIVE FILMS, PAINTS, MEMBRANES, ETC., WITH THE PURPOSE OF REFLECTING AWAY FROM A SURFACE THE SUN'S RADIANT (HEAT) ENERGY. INSTALLED IN BUILDINGS, MANUFACTURES ARE CLAIMING SIGNIFICANT ENERGY SAVINGS, ESPECIALLY FOR COOLING COSTS. ELECTRIC AIR CONDITIONING IS MORE EXPENSIVE PER "DEGREE CHANGE" THAN HEATING. WHERE MODERN HOUSEHOLD ENVIRONMENTS ARE CONTINUALLY "CONDITIONED" ANNUAL COOLING COSTS MAY EQUAL OR EXCEED HEATING COSTS.
- SHEATHING OPTION: SOME MANUFACTURERS ARE PROVIDING WALL AND ROOF SHEATHING WITH A FACTORY APPLIED FOIL FACE, HOWEVER SPRAY FOAM INSULATIONS MAY NOT ADHERE TO THESE FOIL FACES.
- PAINT PRODUCT OPTION: SHERWIN WILLIAMS "E-BARRIER," APPLY PER MANUFACTURER'S RECOMMENDATIONS. DO CAREFUL COORDINATION WITH THE LOCAL REPRESENTATIVE. SURFACE COVERAGE DOES NOT HAVE TO BE PERFECT. ACHIEVE BEST COVERAGE AS IS PRACTICAL. THIS IS A SOFT METALLIC FINISH, AND SPRAY FOAMS WILL ADHERE.
- SURFACES TO RECEIVE BARRIER:
 - UNDERSIDE (INTERIOR) OF ALL ROOF SHEATHING.
 - INTERIOR SIDE OF ALL ATTIC GABLE WALLS, ESPECIALLY SOUTH AND WEST FACING.
 - INTERIOR SIDE OF ALL SOUTH AND WEST FACING OCCUPIED ROOM WALLS.

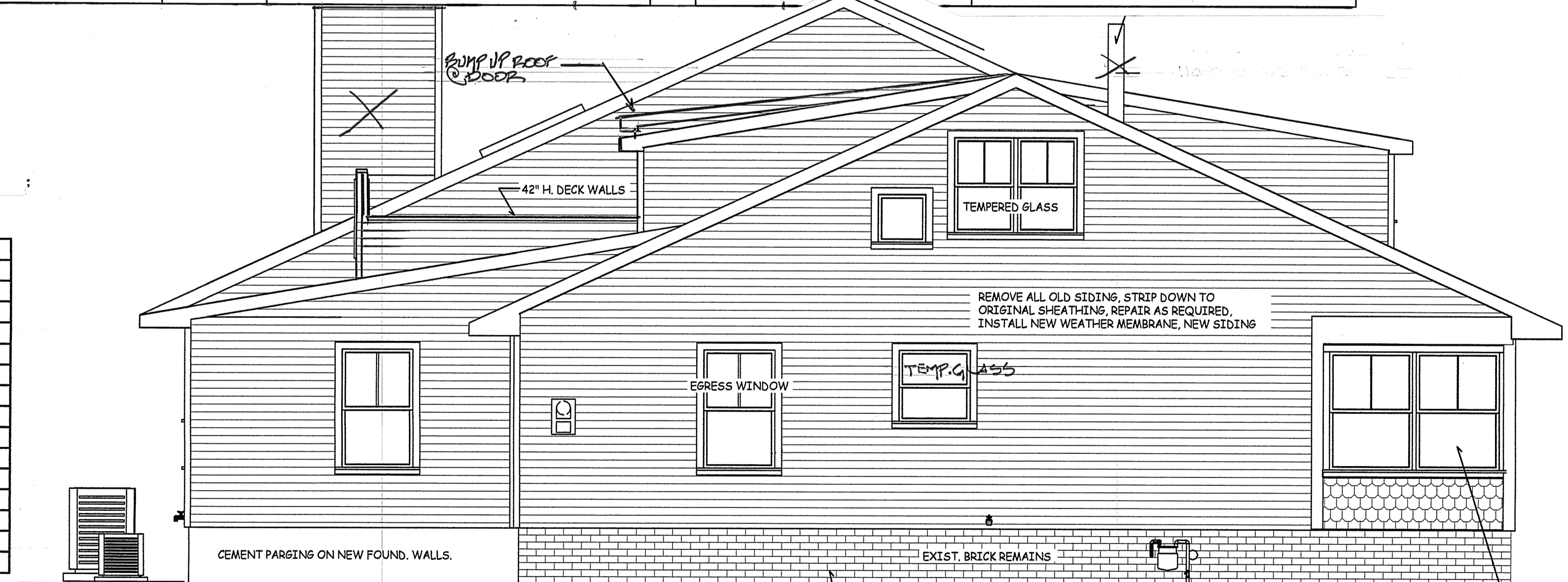


2
8 EAST FACING HOUSE - RIGHT SIDE ELEVATION

SCALE 1/4" = 1'-0"

EXTERIOR MATERIALS:

MATERIAL	MFG.	STYLE AND COLOR	SIDING WINDOW CASING	NICE 3" WIDE CASING,
WINDOWS			ROOF: FIBERGLASS SHINGLES	30 YEAR WARRANTY PRODUCT. SLATE GREY BLEND, WITH HEAVY ACCENT ON BLUE.
WINDOW SASH			FASCIAS & RAKE BO'S:	ALUM COIL: NOT WHITE OR BROWN, PICK A NICE COLOR
WINDOW FRAME			SOFFITS	CERTAINTEED: 1" VINYL BEAD BOARD NON-VENTED, COLOR, STERLING GREY
SIDING: FIELD			GUTTER	ALUM COIL: NOT WHITE OR BROWN, PICK NICE COLOR
SIDING CORNER BOARDS			DOWNSPOUT	MFG STD. WHITE, PAINT AS REQUIRED.



1
8 WEST FACING HOUSE - LEFT SIDE ELEVATION

SCALE 1/4" = 1'-0"

REVISION DESCRIPTION	DATE
START UP	OCT. 22, 2008
FINAL PRELIMINARY REVIEW	12-11-2008
FOR PERMIT SUBMISSION	01-05-2009
REVISED PER TYP. REPORT 12/15/08	01-18-09

NOT VALID FOR PERMITS UNLESS AFFIXED WITH EMBOSSED SEAL & ORIGINAL SIGNATURE IN RED

Eric C. Van Reed, Architect
Creative Design Associates, Inc.
 ARCHITECTURE INTERIORS SITE & SPACE PLANNING
 350 Calverhill Road
 Chalfont, PA 18914
 Voice: 715-672-1155
 www.CreativeDesign.com

639 Walnut Avenue, East
 ADDITIONS & RENOVATIONS
 BENSALAM TWP., BUCKS CO., PA